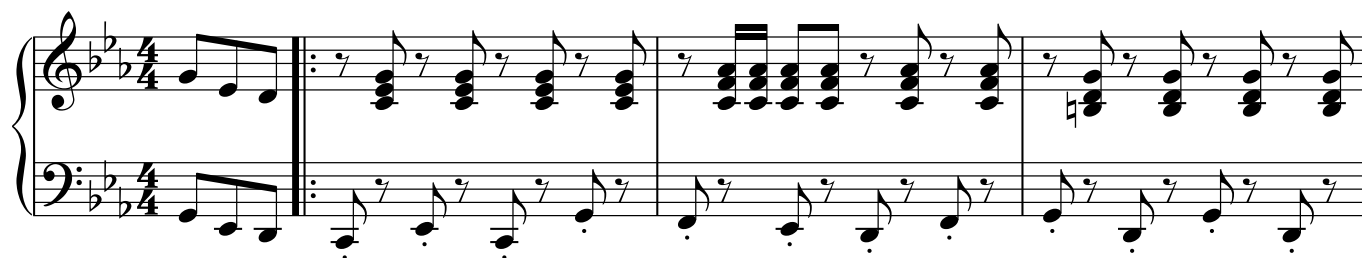


## Христос - надія тих сердець

В. Крейман

Ар. Л. Шк.



24

Measures 24-26 of the Piano II part. The key signature is B-flat major (two flats). The time signature is 4/4. Measure 24: Treble clef has a quarter rest followed by a quarter note G4, a quarter note A4, and a quarter note B4. Bass clef has a quarter note G2, a quarter note A2, and a quarter note B2. Measure 25: Treble clef has a quarter note G4, a quarter note A4, and a quarter note B4. Bass clef has a quarter note G2, a quarter note A2, and a quarter note B2. Measure 26: Treble clef has a quarter note G4, a quarter note A4, and a quarter note B4. Bass clef has a quarter note G2, a quarter note A2, and a quarter note B2.

27

Measures 27-29 of the Piano II part. Measure 27: Treble clef has a quarter note G4, a quarter note A4, and a quarter note B4. Bass clef has a quarter note G2, a quarter note A2, and a quarter note B2. Measure 28: Treble clef has a quarter note G4, a quarter note A4, and a quarter note B4. Bass clef has a quarter note G2, a quarter note A2, and a quarter note B2. Measure 29: Treble clef has a quarter note G4, a quarter note A4, and a quarter note B4. Bass clef has a quarter note G2, a quarter note A2, and a quarter note B2. The piece ends with a double bar line.

1. *mf* 2.